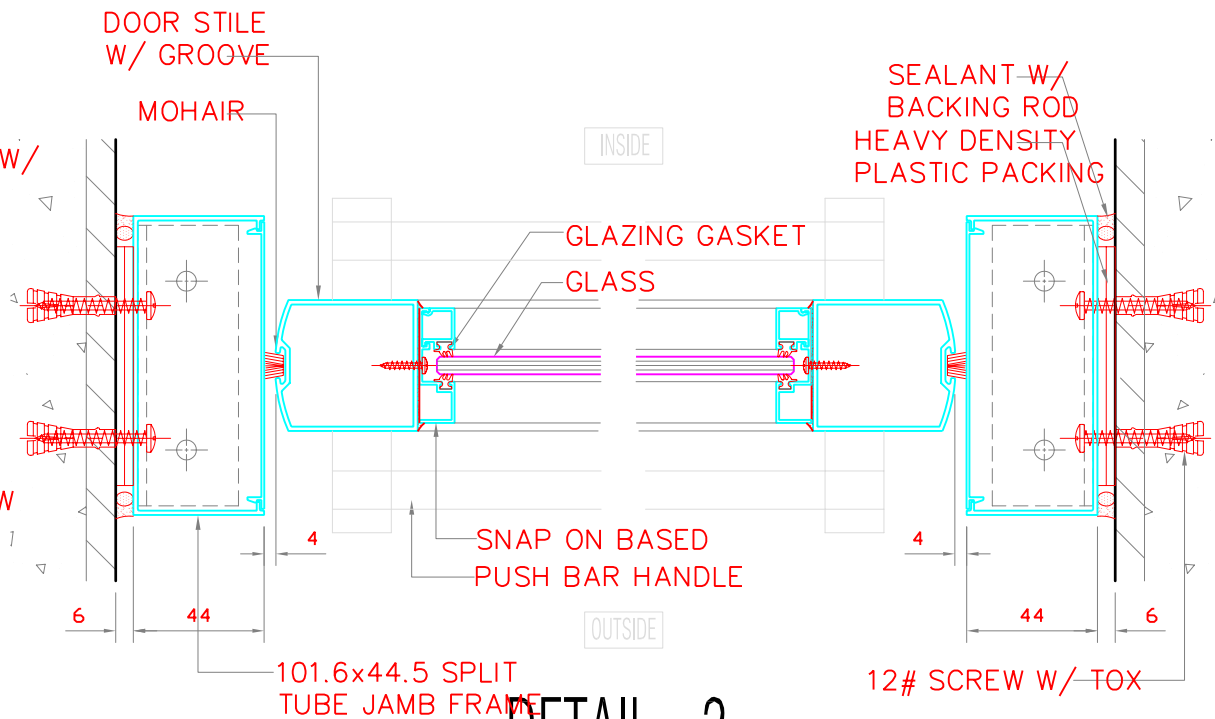
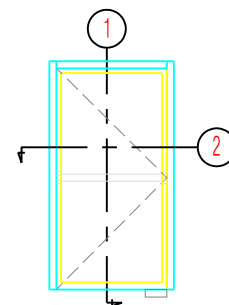


**DETAIL - 1**



**DETAIL - 2**

**SPECIAL SECTION DETAILS  
SINGLE LEAF DOOR**



**SWING DOOR**

<b>SPI</b>		4th Floor 115 Y - L Building Rufino Corner Salcedo Street, Legazpi Village, Makati City		Phone: (632) 892-8437 Facsimile: (632) 893-9867
Seapac Philippines, Inc.				
Subject: 2100 SERIES - SWING DOOR DETAILS, SINGLE LEAF				
Drawn by: RTA	Date:	Drawing No.	REVISION:	
Checked by: CS	Scale: 1 : 3	A4	2100 / D/ 300	-
SEAPAC PHILIPPINES, INC. THESE DESIGN DRAWING AND THE COPYRIGHT THERE IN ARE PROPERTY OF SEAPAC PHILIPPINES INC. AND MUST NOT BE DIVULGED REPRODUCED OR COPIED WITHOUT WRITTEN PERMISSION.				