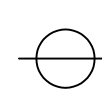
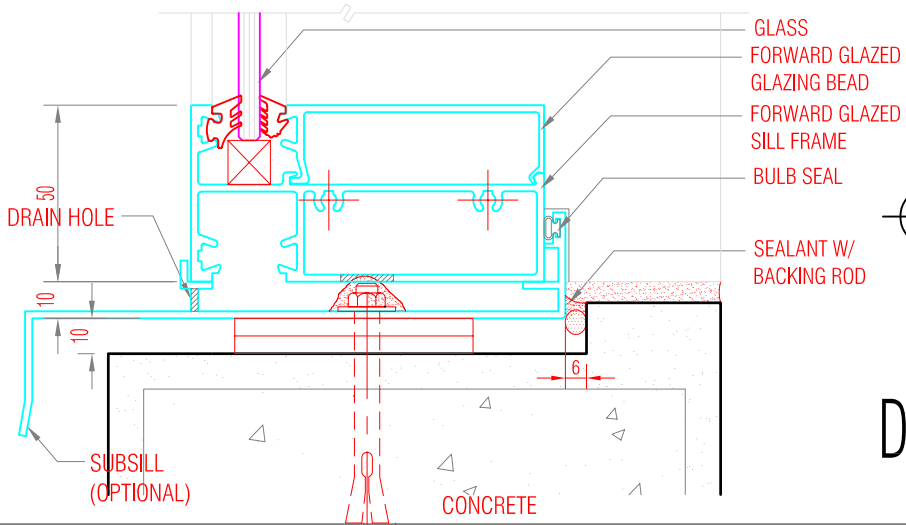
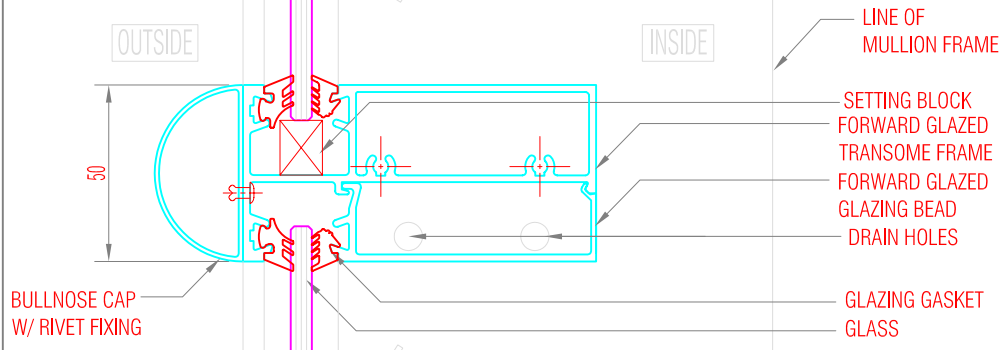
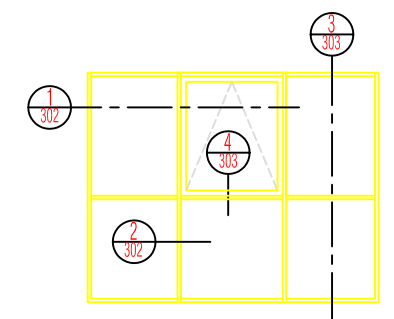


DETAIL-4



SPECIAL SECTION DETAILS  
FORWARD RUBBER GLAZED WINDOWS

DETAIL-3



ELEVATION

<b>SPI</b> Seapac Philippines, Inc.		4th Floor 115 Y - L Building Rufino Corner Salcedo Street, Legazpi Village, Makati City		Phone: (632) 892-8437 Facsimile: (632) 893-9867	
Subject: 5600 SERIES - COMMERCIAL FORWARD RUBBER GLAZED WDWs					
Drawn by: CSG	Date:	Drawing No.		REVISION:	
Checked by: CS	Scale: 1 : 2.5	A4	5600 / CRG / 303		-
SEAPAC PHILIPPINES, INC. THESE DESIGN DRAWING AND THE COPYRIGHT THERE IN ARE PROPERTY OF SEAPAC PHILIPPINES INC. AND MUST NOT BE DIVULGED REPRODUCED OR COPIED WITHOUT WRITTEN PERMISSION.					